

**Inhibin, alpha**  
**Mouse Monoclonal antibody(Mab)**  
**Catalog # AD80296**

## Specification

---

### Inhibin, alpha - Product info

Application	<b>IHC-P</b>
Primary Accession	<a href="#">P05111</a>
Reactivity	<b>Human</b>
Host	<b>Mouse</b>
Clonality	<b>Monoclonal</b>
Calculated MW	<b>39670</b>

### Inhibin, alpha - Additional info

Gene ID	<b>3623</b>
Gene Name	<b>INHA</b>
<b>Other Names</b>	
Inhibin alpha chain, INHA	

#### Dilution

IHC-P~~Ready-to-use

#### Storage

Maintain refrigerated at 2-8°C

#### Precautions

**Inhibin, alpha Antibody is for research use only and not for use in diagnostic or therapeutic procedures.**

### Inhibin, alpha - Protein Information

**Name** INHA

#### Function

**Inhibins and activins inhibit and activate, respectively, the secretion of follitropin by the pituitary gland. Inhibins/activins are involved in regulating a number of diverse functions such as hypothalamic and pituitary hormone secretion, gonadal hormone secretion, germ cell development and maturation, erythroid differentiation, insulin secretion, nerve cell survival, embryonic axial development or bone growth, depending on their subunit composition. Inhibins appear to oppose the functions of activins.**

**Cellular Location**  
**Tissue Location**

**Secreted.**  
**Originally found in ovary (granulosa cells)**

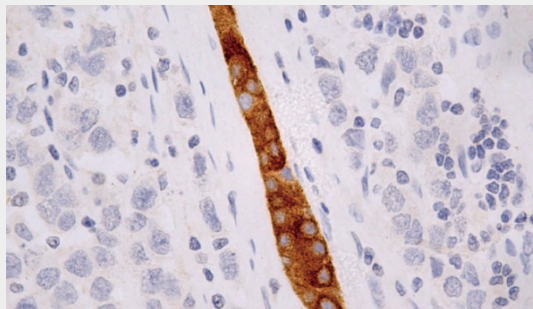
and testis (Sertoli cells), but widely distributed in many tissues including brain and placenta. In adrenal cortex expression is limited to the zona reticularis and the innermost zona fasciculata in the normal gland, extending centripetally into the zona fasciculata in hyperplasia. Also found in adrenocortical tumors Also expressed in prostate epithelium of benign prostatic hyperplasia, in regions of basal cell hyperplasia and in nonmalignant regions of high grade prostate cancer. Only circulating inhibin B is found in male, whereas circulating inhibins A and B are found in female

### Inhibin, alpha - Protocols

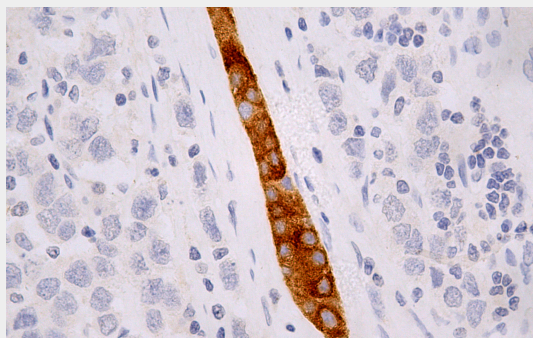
Provided below are standard protocols that you may find useful for product applications.

- [Western Blot](#)
- [Blocking Peptides](#)
- [Dot Blot](#)
- [Immunohistochemistry](#)
- [Immunofluorescence](#)
- [Immunoprecipitation](#)
- [Flow Cytometry](#)
- [Cell Culture](#)

### Inhibin, alpha - Images



Seminoma



Immunohistochemical analysis of paraffin-embedded seminoma tissue using AD80296 performed

on the Abcarta® FAIP-30 Fully automated IHC platform. Tissue was fixed with formaldehyde at room temperature, antigen retrieval was by heat mediation with a EDTA buffer (pH 9.0). Samples were incubated with primary antibody (Ready-to-use) for 15 min at room temperature. AmpSee™ Detection Systems [Abcepta:AR005] was used as the secondary antibody.